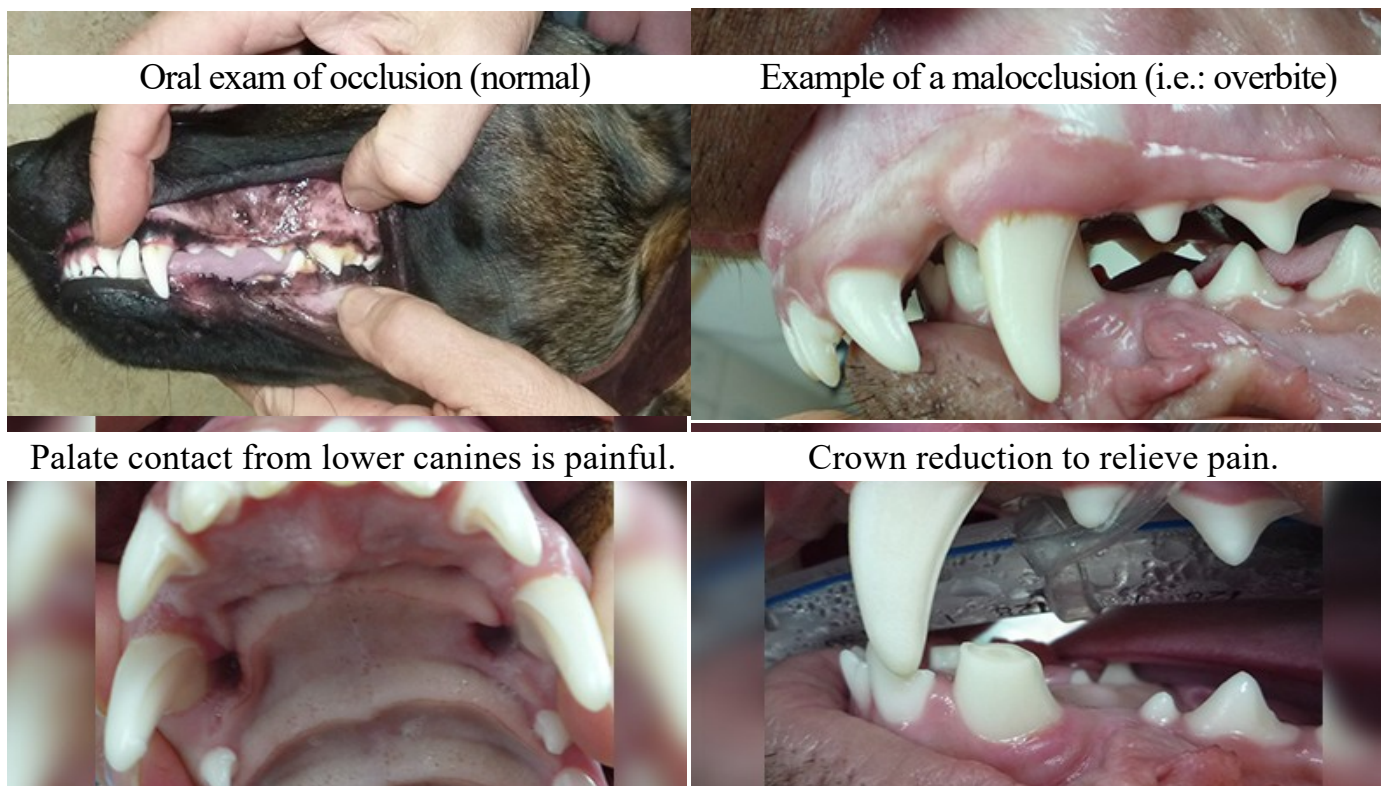


BITE EVALUATION

Each and every pet deserves a comfortable and functional bite! Unfortunately some pets have misalignments or other common oral conditions affecting his/her bite.

FACTS

- Puppies have 30 deciduous/baby teeth that erupt by 8 weeks of age, kittens have 24.
- These baby teeth are replaced by 42 adult teeth in dogs and 30 teeth in cats by 6 months of age
- Overbite, underbite, mal-aligned teeth, impacted teeth and extra teeth can contribute to a painful bite – this could very likely affect their ability to do things like play with their toys or even eat.



Starting with routine puppy visits, the bite/occlusive relationship between the upper and lower jaws are evaluated. Often painful malocclusions can be avoided with interceptive orthodontics/extractions.

These conditions vary in severity via breed, size or shape/formation of skull. Treatment may also vary based upon the patient's intended use and lifestyle.

Majority of malocclusions are genetic. Those pet owners are often encouraged to consider sterilizing their pet to stop their offspring from suffering from the same conditions.

Schedule a FREE dental assessment with Kevin for your pet to see if their bite is both comfortable and functional!

Join us next month when we discuss types of treatments for these malocclusions. Yes, that's right!! - VETERINARY ORTHODONTICS!